



FilterWare™

HMI/SCADA and Reporting Software



Features & Benefits

- Central Monitoring and Control
- Reliable and Secure Architecture
- Turnkey and Customizable
- Maintenance and Process Reporting
- Automated EPA reporting
- Single Process or Plant Wide



Made in USA

Overview

FilterWare provides process visualization, control, data logging, report generation and remote services for process filtration, industrial ventilation and air pollution control systems. Whether the need is for a single baghouse or a plant-wide network of dust collectors, mist eliminators, stacks, scrubbers or RTOs, FilterWare is designed to improve operations and reduce costs.

FilterWare interfaces with FilterSense diagnostic controllers such as B-PACs for baghouses. It also integrates with FilterSense's particulate CEMs, filter leak detectors and leak locating systems. Other existing plant sensors and devices are easily incorporated as well.

FilterWare automates process control, maintenance and EPA compliance needs simultaneously providing a fast return on investment. The software can turn a perceived EPA expense into an opportunity to improve productivity, maximize equipment performance and lower operating costs.

Maintenance Planning

- Maximize productivity of personnel
- Plan repairs and prevent unforeseen down time

Process Optimization

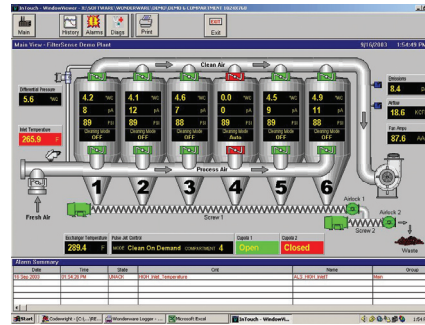
- Control and automate production
- Improve filtration efficiency to increase product recovery

EPA Compliance

- Automatically generate reports compliant to 40 CFR
- Eliminate manual record keeping and visual inspections

HMI/SCADA

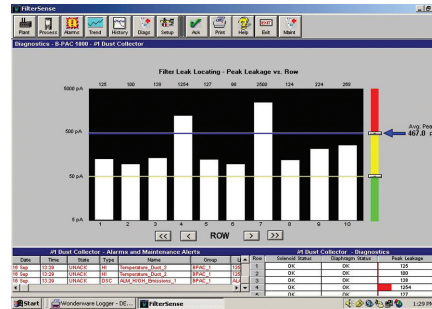
Process Views



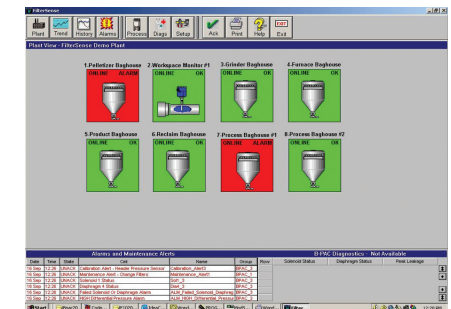
Analysis and Trending



Diagnostic Tools



Alarm Status and Logs



Specifications

- Up to 32 nodes & 64,000 tags
- Local or server based SQL data
- User and administrator security
- Integrated OPC and DDE servers
- Optional E-mail functions

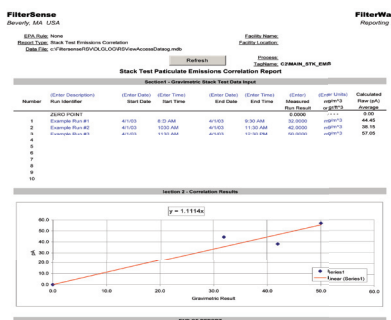
Meets US EPA MACT

40 CFR Part 63

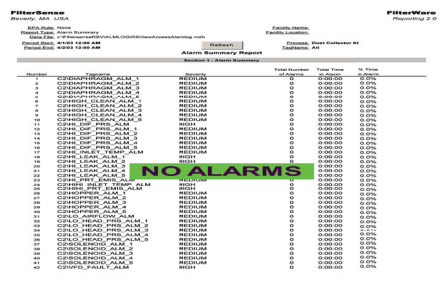
Requires proper configuration

Reporting

Compliant EPA Reports



Process & Maintenance Reports



System Requirements

Operating system:	Windows XP with SP2 Windows 2003 Server
Recommended Hardware:	1.2 GHz Pentium III or higher 1GB RAM, 80 GB free hard disk space CD-RW and tape backup Internet access or modem Turn-key PCs with pre-loaded software available on request

FilterSense

800 Cummings Center
Beverly, MA 01915 USA
Tel: 978-927-4304
Fax: 978-927-4329
www.filtersense.com
info@filtersense.com

Advanced Solutions for Process Filtration

Copyright 2008
Specifications Subject to Change